

NT35510 Industrial Tft Lcd Screen CH430WV15A-CT Sunlight Readable LCD Display

Our Product Introduction

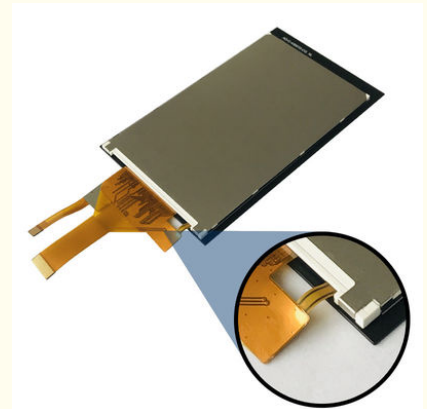
Basic Information

- Place of Origin: ShenZhen, China
- Brand Name: Chenghao/Oem
- Certification: ROHS、ISO9001、CE
- Model Number: CH430WV15A-CT
- Minimum Order Quantity: 100 pcs
- Price: /
- Packaging Details: All the products are packed in right way to keep it safe. For small sizes of products we use tray + carton, For bigger sizes we use foam slot + carton. we also design packages according to customers' requirements
- Delivery Time: 7-15 working days
- Payment Terms: T/T
- Supply Ability: 300Kpcs/month

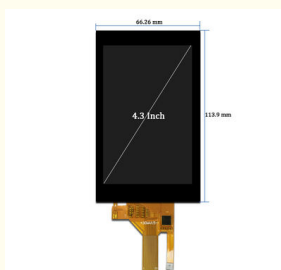


Product Specification

- LCD Type: 4.3 Inches
- Dot Arrangement: 480×(RGB)×800 Dots
- Color Filter Array: RGB Vertical Stripe
- Display Mode: IPS/ Transmissive/ NormallyBlack
- Viewing Direction: Free Viewing Angle
- TFTDriver IC: NT35510
- CTPtype: G+F+F
- Surface Treatment: 6H
- CTP Driver IC: GT911
- Highlight: NT35510 Industrial Tft Lcd Screen , Industrial Tft Lcd Screen CH430WV15A-CT , CH430WV15A-CT Sunlight Readable LCD Display



More Images



Product Description

9" Industrial Tft Lcd Screen Display Module Sunlight Readable All Viewing Angle 480*800

Product Parameter

LCD type	4.3"TFT+CTP
Dot arrangement	480×(RGB)×800 dots
Color filter array	RGB vertical stripe
Display mode	IPS/ Transmissive/ NormallyBlack
Viewing Direction	ALL
TFTDriver IC	NT35510
CTPtype	G+F+F
Surface Treatment	6h
CTP Driver IC	GT911
Module size	66.26(W)×113.9(H)×3.35(T) mm
TFT/CTPActive area	56.16(W)×93.6(H) mm
Dotpitch	0.117(W)×0.117(H) mm
Interface	2 lane-MIPI DSI

Company Strength:

- 1> ISO9001 certificated, Factory Direct Supplied
- 2> RoHS Compliant, Lead Free, Reach Compliant
- 3> Competitive Price and Short Lead-time
- 4> Professional Team with Rich Experiences in Design/Mfg/Quality Control
- 5> Small MOQ Support & Fast Response to Customers
- 6> Long Product Life Time

Product Description

ChengHao Display model CH430WV15A-CT is a color active matrix thin film transistor (TFT) liquid crystal display (LCD) that uses amorphous silicon TFT as a switching device. This model is composed of a TFT LCD panel, a driving IC, a high brightness back-light, a capacitive touch panel and FPC.

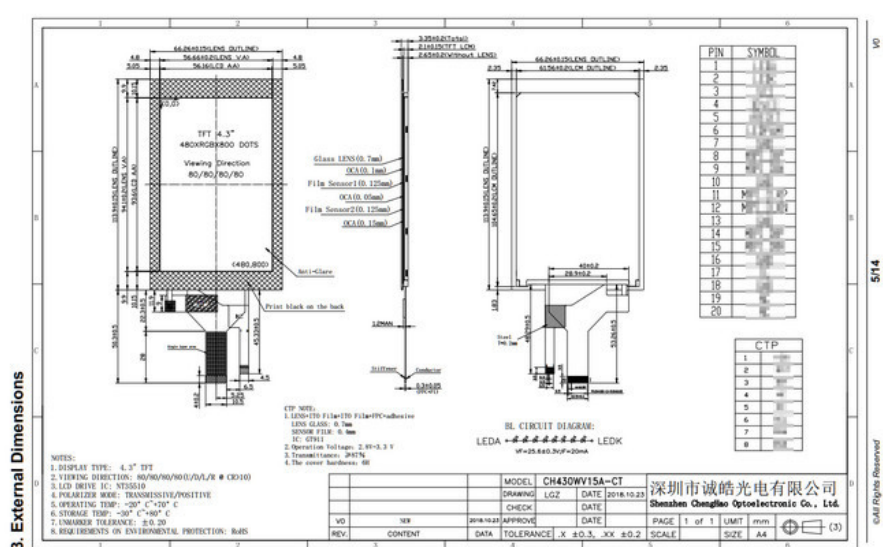
This TFT LCD has a 4.3 (vertical Screen)inch diagonally measured active display area with WVGA (480 horizontal by 800 vertical pixel) resolution.

The driver used for this project is the NT35510 and can display 16M colors by 24 bit R.G.B. signal input. The driver is mounted on the glass and the interconnection via FPC including components to drive the display module. Support RGB interface.

In addition, FPC can also be customized according to customer requirements, such as modifying back-light and CTP structure, interface definition, etc.

RoHS Compliance & Halogen Free.

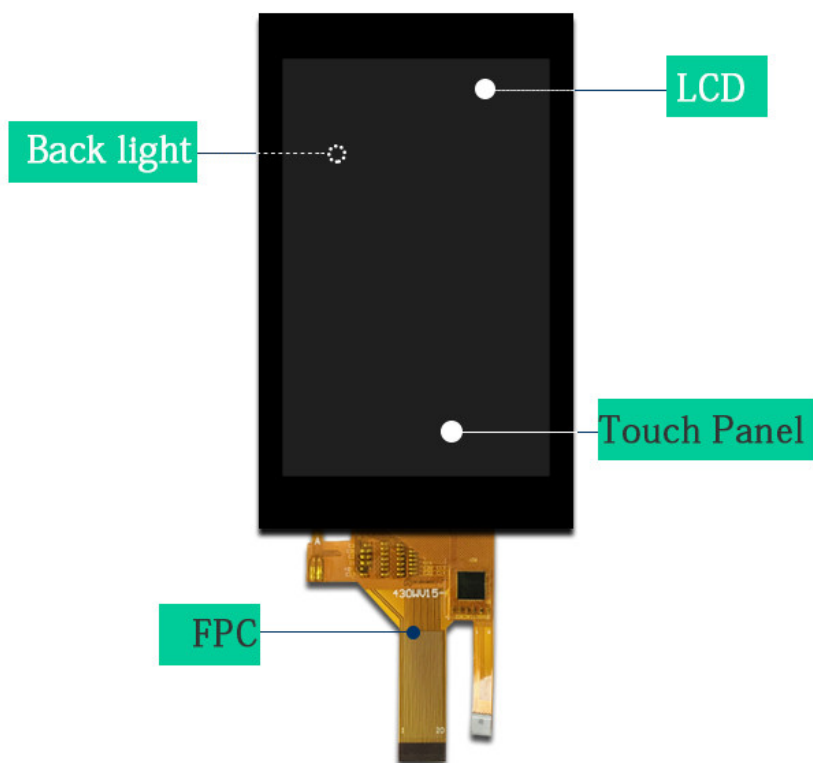
Product Drawings



Product Customization

Product Customization

The part marked in the figure below is the content that can be customized according to customer needs



Tip: all of our products can be with or without touch, whatever you choose. Backlight brightness and FPC interface can be customized according to your requirements.

Other Product

Module Type	Display Area	Display Mode
1.44 inch	25.50 * 26.50 mm	Normally White IPS, Transmissive
1.44 inch	25.50 * 26.50 mm	Normally White TN, Transmissive
1.50 inch	29.76 * 22.32 mm	Normally Black IPS, Transmissive
1.54 inch	27.72 * 27.72 mm	Normally Black IPS, Transmissive
1.54 inch	27.74 * 27.74 mm	Normally Black IPS, Transmissive
1.77 inch	28.03 * 35.04 mm	Normally White TN, Transmissive
1.80 inch	28.03 * 35.04 mm	Normally White TN, Transmissive
2.00 inch	30.60 * 40.80 mm	Normally White TN, Transmissive
2.10 inch	Circular display area	Normally White IPS, Transmissive
2.31 inch	46.75 * 35.06 mm	Normally White TN, Transmissive
2.40 inch	36.72 * 48.96 mm	Normally White TN, Transmissive
2.40 inch	36.72 * 48.96 mm	Normally White IPS, Transmissive
2.80 inch	43.20 * 57.60 mm	Normally White TN, Transmissive
2.80 inch	43.20 * 57.60 mm	Normally White IPS, Transmissive
3.00 inch	36.72 * 65.28 mm	Normally Black IPS, Transmissive
3.20 inch	48.60 * 64.80 mm	Normally White TN, Transmissive
3.50 inch	70.08 * 52.56 mm	Normally White TN, Transmissive
3.50 inch	70.08 * 52.56 mm	Normally Black IPS, Transmissive
4.00 inch	51.84 * 86.4 mm	Normally Black IPS, Transmissive
4.00 inch	71.86 * 70.18 mm	Normally Black IPS, Transmissive
4.30 inch	95.04 * 53.86 mm	Normally White TN, Transmissive
4.30 inch	95.04 * 53.86 mm	Normally Black IPS, Transmissive
5.00 inch	110.88 * 62.83 mm	Normally White TN, Transmissive
5.00 inch	108.00 * 64.80 mm	Normally Black IPS, Transmissive
5.50 inch	68.04 * 120.96 mm	Normally Black IPS, Transmissive
6.00 inch	74.52 * 132.48 mm	Normally Black IPS, Transmissive
7.00 inch	154.08 * 85.92 mm	Normally White TN, Transmissive
7.00 inch	153.6 * 90 mm	Normally White TN, Transmissive
7.00 inch	154.21 mm * 85.92 mm	Normally Black IPS, Transmissive
8.00 inch	107.64 * 172.22 mm	Normally Black IPS, Transmissive
9.00 inch	196.61 * 114.15 mm	Normally White TN, Transmissive
10.10 inch	135.36 * 216.58 mm	Normally Black IPS, Transmissive

Packaging & Shipping:

Packaging Details:

1. All the products are packed in right way to keep it safe.
2. For small sizes of products we use tray + carton,
3. For bigger sizes we use foam slot + carton.
4. we also design packages according to customers' requirements



Shenzhen ChengHao Optoelectronic Co., Ltd.



+86 755-27806536



add@chenghaolcm.com



chenghaolcd.com

7th floor, building C5, Hengfeng Industrial City, Hangcheng street, Bao'an District, Shenzhen