



## ISO9001 Small Lcd Touch Screen 3.5 Inch 320x480 Tn lcd tft touchscreen

### Our Product Introduction

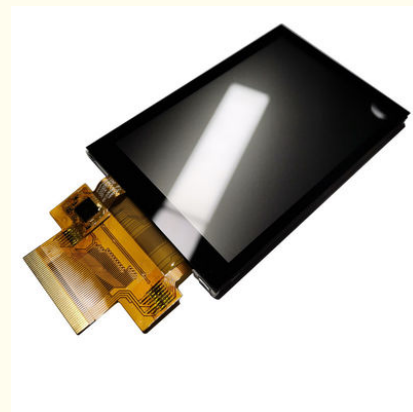
#### Basic Information

- Place of Origin: ShenZhen, China
- Brand Name: Chenghao/Oem
- Certification: ROHS、 ISO9001、 CE
- Model Number: CH350HV37A-CT
- Minimum Order Quantity: 100 pcs
- Price: /
- Packaging Details: All the products are packed in right way to keep it safe. For small sizes of products we use tray + carton, For bigger sizes we use foam slot + carton. we also design packages according to customers' requirements
- Delivery Time: 7-15 working days
- Payment Terms: T/T
- Supply Ability: 300Kpcs/month



#### Product Specification

- LCD Type: 3.5 Inch
- Dot Arrangement: 320×480
- Color Filter Array: RGB Vertical Stripe
- Display Mode: TN/ Transmission/ NormallyWhite
- Viewing Direction: 6o'clock
- GrayScaleInversionDirection: 12o'clock
- TFT Driver IC: ILI9488
- CTP Type: P+G
- Highlight: ISO9001 Small Lcd Touch Screen, 3.5in CTP Small Lcd Touch Screen, 320x480 Tn lcd tft touchscreen



#### More Images



## Product Description

### Small Lcd Touch Screen Display Panel 3.5 Inch 320x480 Tn 6 O'Clock Viewing Direction CTP

#### Product Parameter

ITEM	STANDARD VALUES
LCD type	3.5"TFTWith CTP
Dot arrangement	320(RGB)×480 dots
Color filter array	RGB vertical stripe
Display mode	TN/ Transmission/ NormallyWhite
Viewing Direction	6o'clock
Gray Scale Inversion Direction	12o'clock
TFT Driver IC	ILI9488
CTP type	P+G

1> ISO9001 certificated, Factory Direct Supplied

#### Company Strength:

2> RoHS Compliant, Lead Free, Reach Compliant

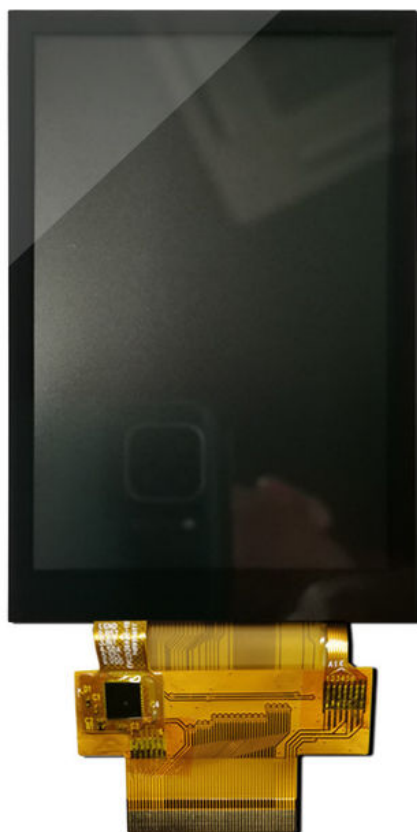
3> Competitive Price and Short Lead-time

4> Professional Team with Rich Experiences in Design/Mfg/Quality Control

5> Small MOQ Support & Fast Response to Customers

6> Long Product Life Time

#### Product Description



##ChengHao Display model CH350HV37A-CT is a color active matrix thin film transistor (TFT) liquid

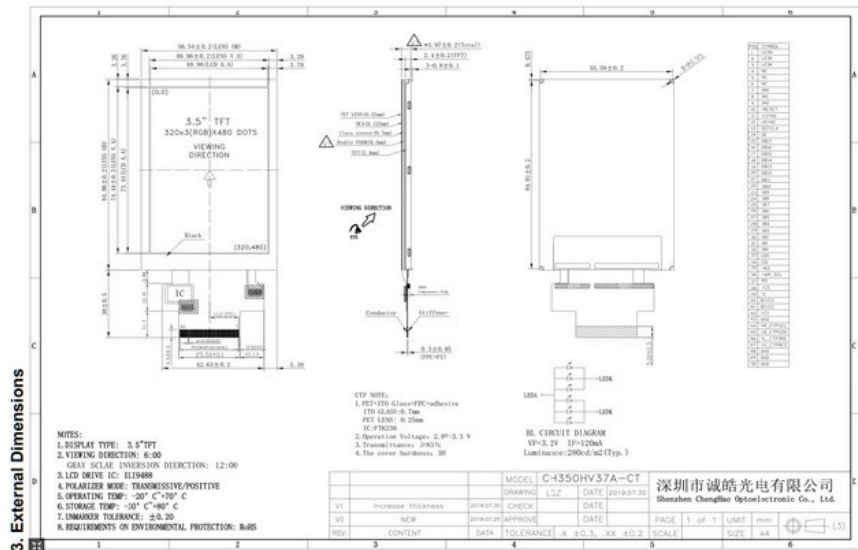
crystal display (LCD) that uses amorphous silicon TFT as a switching device. This model is composed of a TFT LCD panel, a driving circuit, a high brightness back-light, a capacitive touch screen and FPC.

##The TFT display is a color active matrix thin film transistor (TFT) liquid crystal display (LCD) that uses amorphous silicon TFT as a switching device. This TFT LCD has a 3.5 (3:2) inch diagonally measured active display area with HVGA (320 horizontal by 480 vertical pixel) resolution.

##The driver used for this project is the ILITEK ILI9488 or compatible and can display 262K colors by 18 bit R.G.B. signal input. The driver is mounted on the glass and the interconnection via FPC including components to drive the display module. Support SPI, MCU, SPI + RGB interface.

## RoHS Compliance & Halogen Free.

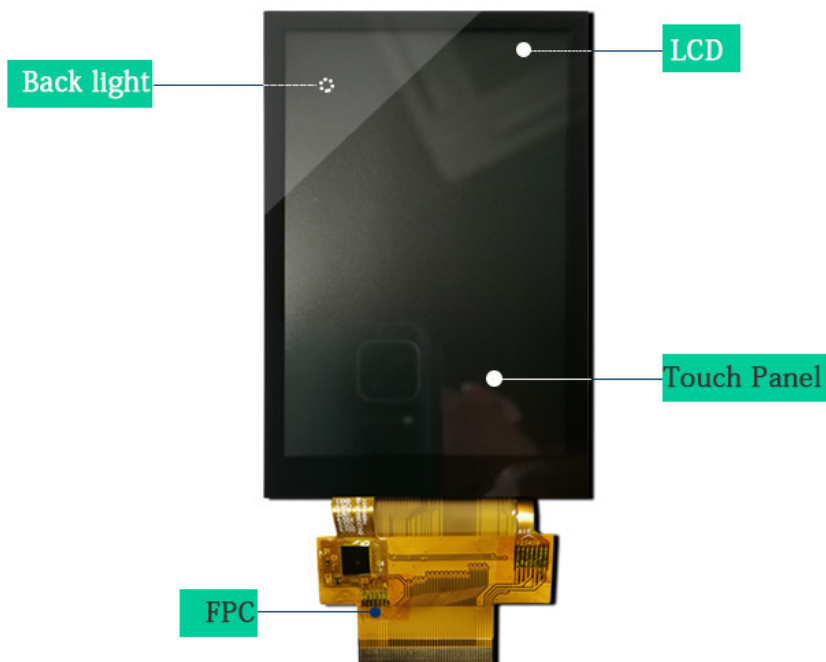
## Product Drawings



## Product Customization

### Product Customization

The part marked in the figure below is the content that can be customized according to customer needs



About Customization:

all of our products can be with or without touch, whatever you choose. Backlight brightness and FPC interface can be customized according to your requirements.

## Product Customization

Module Type	Display Area	Display Mode
1.44 inch	25.50 * 26.50 mm	Normally White IPS, Transmissive
1.44 inch	25.50 * 26.50 mm	Normally White TN, Transmissive
1.50 inch	29.76 * 22.32 mm	Normally Black IPS, Transmissive
1.54 inch	27.72 * 27.72 mm	Normally Black IPS, Transmissive
1.54 inch	27.74 * 27.74 mm	Normally Black IPS, Transmissive
1.77 inch	28.03 * 35.04 mm	Normally White TN, Transmissive
1.80 inch	28.03 * 35.04 mm	Normally White TN, Transmissive
2.00 inch	30.60 * 40.80 mm	Normally White TN, Transmissive
2.10 inch	Circular display area	Normally White IPS, Transmissive
2.31 inch	46.75 * 35.06 mm	Normally White TN, Transmissive
2.40 inch	36.72 * 48.96 mm	Normally White TN, Transmissive
2.40 inch	36.72 * 48.96 mm	Normally White IPS, Transmissive
2.80 inch	43.20 * 57.60 mm	Normally White TN, Transmissive
2.80 inch	43.20 * 57.60 mm	Normally White IPS, Transmissive
3.00 inch	36.72 * 65.28 mm	Normally Black IPS, Transmissive
3.20 inch	48.60 * 64.80 mm	Normally White TN, Transmissive
3.50 inch	70.08 * 52.56 mm	Normally White TN, Transmissive
3.50 inch	70.08 * 52.56 mm	Normally Black IPS, Transmissive
4.00 inch	51.84 * 86.4 mm	Normally Black IPS, Transmissive
4.00 inch	71.86 * 70.18 mm	Normally Black IPS, Transmissive
4.30 inch	95.04 * 53.86 mm	Normally White TN, Transmissive
4.30 inch	95.04 * 53.86 mm	Normally Black IPS, Transmissive
5.00 inch	110.88 * 62.83 mm	Normally White TN, Transmissive
5.00 inch	108.00 * 64.80 mm	Normally Black IPS, Transmissive
5.50 inch	68.04 * 120.96 mm	Normally Black IPS, Transmissive
6.00 inch	74.52 * 132.48 mm	Normally Black IPS, Transmissive
7.00 inch	154.08 * 85.92 mm	Normally White TN, Transmissive
7.00 inch	153.6 * 90 mm	Normally White TN, Transmissive
7.00 inch	154.21 mm * 85.92 mm	Normally Black IPS, Transmissive
8.00 inch	107.64 * 172.22 mm	Normally Black IPS, Transmissive
9.00 inch	196.61 * 114.15 mm	Normally White TN, Transmissive
10.10 inch	135.36 * 216.58 mm	Normally Black IPS, Transmissive

### Packaging & Shipping:

Packaging Details:

1. All the products are packed in right way to keep it safe.
2. For small sizes of products we use tray + carton,
3. For bigger sizes we use foam slot + carton.
4. we also design packages according to customers' requirements

[Go to the shop to see more products](#)



**Shenzhen ChengHao Optoelectronic Co., Ltd.**



+86 755-27806536



add@chenghaolcm.com



chenghaolcd.com

7th floor, building C5, Hengfeng Industrial City, Hangcheng street, Bao'an District, Shenzhen