

CTP FPC TFT LCD Monitor 1024x600 Dots 24 Bits Parallel 7 Inch

Our Product Introduction

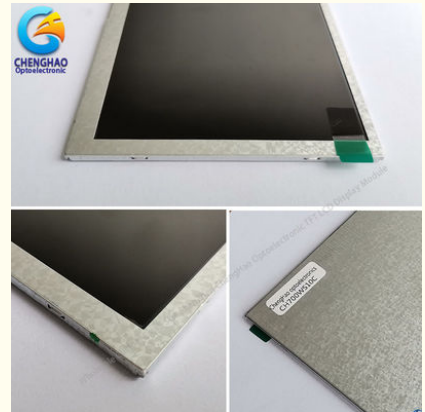
Basic Information

- Place of Origin: ShenZhen, China
- Brand Name: Chenghao/Oem
- Certification: ROHS、ISO9001、CE
- Model Number: CH700WS10C
- Minimum Order Quantity: 100 pcs
- Price: /
- Packaging Details: All the products are packed in right way to keep it safe. For small sizes of products we use tray + carton, For bigger sizes we use foam slot + carton. we also design packages according to customers' requirements
- Delivery Time: 7-15 working days
- Payment Terms: T/T
- Supply Ability: 300Kpcs/month



Product Specification

- Product Name: 7 Inch Tft Lcd Monitor
- SIZE / Inch: 7 Inch
- Dot Arrangement: 1024x600 Dots
- Module Size: 16.49×10.0×0.35 Cm
- Pixel Pitch: 0.01506(W)×0.01432(H) Cm
- Viewing Direction: 80/80/80/80
- Highlight: CTP FPC TFT LCD Monitor,
1024x600 Dots TFT LCD Monitor,
ISO9001 TFT LCD Panel



Product Description

1. Specification

ITEM	STANDARD VALUES	UNITS
LCD type	7inch-TFT	--
Dot arrangement	1024×600×3(RGB)	dots
Color Pixel Arrangement	RGB vertical stripe	--
Display Mode	RGB vertical stripe	--
Viewing Direction	80/80/80/80	--
Module size	16.49×10.00(H)×0.35(T)	cm
Active area	15.421(W)×8.592(H)	cm
Dot pitch	0.01506(W)×0.01432(H)	cm
Interface	24 bit RGB Interface	--

2. Description

ChengHao Display model CH700WS10C is a color active matrix thin film transistor (TFT) liquid crystal display (LCD) that uses amorphous silicon TFT as a switching device. This model is composed of a TFT LCD panel, a driving IC, a high brightness back-light and FPC.

CH700WS10C has a 7 (Landscape screen) inch diagonally measured active display area with 1024*600 (1024 horizontal by 600 vertical pixel) resolution.

CH700WS10C can display 16M colors by 24-bit Parallel RGB Interface input.

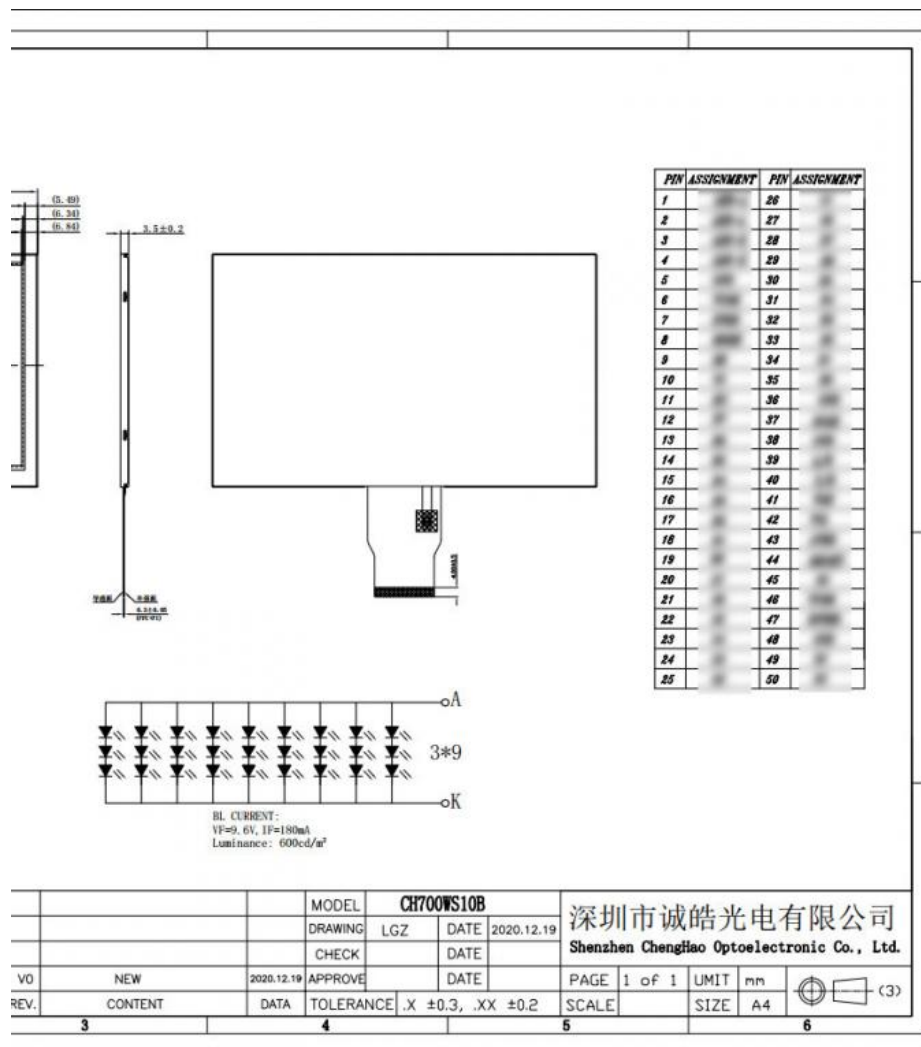
In addition, FPC can also be customized according to customer requirements, such as modifying back-light and CTP structure, interface definition, etc.

RoHS Compliance & Halogen Free.

3. Drawings

Notes:

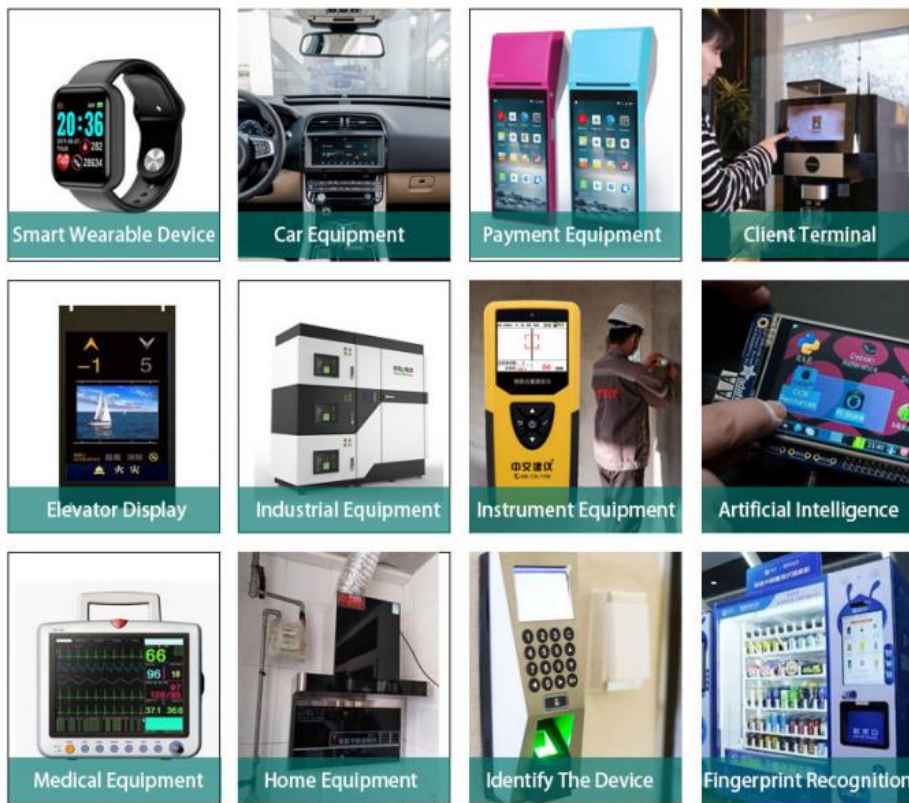
- (1) Display Type : 7.0" TFT
- (2) Viewing Direction : 80/80/80/80
- (3) Lcd Drive IC : //
- (4) Polarizer Mode : Transmissive / Negative
- (5) Operating Temp : -20~70
- (6) Storage Temp : -30~80
- (7) Unmarker Tolerance: ± 0.20
- (8) Protection : ROHS



4. Quick Detail

- * LCD name: 7 Inch Tft Lcd Monitor 24bits Parallel RGB Interface 1024 600 HD Custom Display Modules
- * Part No.: CH700WS10C
- * Size.: 7 inch
- * With touch panel or not: Yes
- * Whether to support custom touch panel: Yes
- * Support Touch Panel type: Capacitive Touch Panel or Resistive Touch Panel
- * Display type: 7"TFT
- * Display colors: 16.7M
- * Resolution (pixels): 1024 (RGB)*600
- * Pixel pitch: 0.1506(W)×0.1432(H) mm
- * Viewing direction: 80/80/80/80
- * Controller IC: //
- * Display mode: Transmissive / Normally Black / IPS
- * Overall size: 164.9(W)×100.0(H)×3.5(T) mm
- * Active Area: 154.21(W)×85.92(H) mm
- * Luminance: 600 cd/m2
- * Contrast: 800:1
- * Interface type: 24-bit Parallel RGB Interface
- * Pin NO.: 40pins
- * Pin pitch: 0.5mm
- * Connecting type: Connector type
- * Backlight type and color: LED backlight / white
- Backlight: 30 LED parallel
- * LED Life span: 20000h

4. Application



5. Our Service

1. Capability to control production cost & material purchase
2. Stable QC capability
3. Strong R&D capability
4. Rapid response to the requirements of customers & market

6. FAQ

Q1: Do you accept customization displays and touch screens?

A: Sure, you can customization the FPC, Backlight and the touch screen.

Q2: What type of interface is your display screen?

A: Small sized of displays generally support SPI, MCU, RGB, MIPI. Medium sized displays generally support LVDS, MIPI, EDP. Different specifications use different interfaces.

Q3: Do you used capacitive touch screen or resistive touch screen.

A: We have capacitive touch screen and resistive touch screen .

Q4: What is your sample policy?

A: If there is stock, you can sample at any time, if there is no stock, it will take some time, and then wait for the materials to come back to sample. But the customer needs to pay the sample fee and express fee.

Q5: How long is your lead time for mass production?

A: It takes about 20 - 45 working days for mass production, depending on the model and order quantity.

Q6: How to ensure long-term stable delivery?

A: First, we will recommend products that can be delivered for a long time to customers, and second, we will have a large number of stocks in advance for a long time.

Q7: What is your mode of payment for mass production?

A: Generally, after receiving 50%-100% deposit from customers, they begin to prepare materials. Delivery is about 5 working days after receipt of the final payment.

Q8: Will you inspect the goods before delivery?

A: Yes, we'll ship the goods after 100% inspection.

Q9: How long is your warranty period?

A: We guarantee the quality for one year.





+86 755-27806536



add@chenghaolcm.com



chenghaolcd.com

7th floor, building C5, Hengfeng Industrial City, Hangcheng street, Bao'an District, Shenzhen