

SPI Interface TFT 10.1 inch Small LCD Touch Screen 1024x600 Resolution

Our Product Introduction

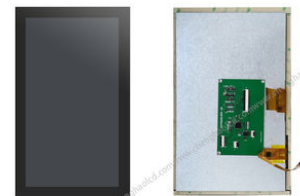
Basic Information

- Place of Origin: ShenZhen, China
- Brand Name: Chenghao/Oem
- Certification: ROHS、ISO9001、CE
- Model Number: CH101WS07A-CT-PA
- Minimum Order Quantity: 100 pcs
- Price: /
- Packaging Details: All the products are packed in right way to keep it safe. For small sizes of products we use tray + carton, For bigger sizes we use foam slot + carton. we also design packages according to customers' requirements
- Delivery Time: 7-15 working days
- Payment Terms: T/T
- Supply Ability: 300Kpcs/month



Product Specification

- Product Name: SPI Interface TFT
- LCD Type: 10.1" TFT + CTP
- Dot Arrangement: 1024(RGB)×600
- Color Filter Array: RGB Vertical Stripe
- Display Mode: Transmissive
- Viewing Direction: 80/80/80
- Highlight: ROHS Approved Small LCD Touch Screen, SPI Interface TFT LCD Touch Screen, LCD Touch Screen 1024× 600dots



Product Description

SPI Interface TFT 10.1 Inch 1024*600 Resolution Small LCD Touch Screen

1. Specification of 1024*600 SPI lcd display

ITEM	STANDARD VALUES	UNITS
LCD type	10.1"IPS TFT+CTP+PCB	--
Dot arrangement	1024(RGB)× 600	dots
Module size	252.00(W)×155.50(H)×10.75(T)	mm
Active area	222.72(W)×125.28(H)	mm
Dot pitch	0.2175(W)×0. 2088(H)	mm
Operating temperature	- 20 ~ + 70	
Storage temperature	- 30 ~ + 80	
Back Light	42 White LED	--
Weight	TBD	g

2. Description of SPI Interface tft lcd

Chenghao CH101WS07A-CT-PA is a color active-matrix LCD module incorporating amorphous silicon IPS TFT (Thin Film Transistor) LCD (liquid crystal display). It consists of a touch panel, color IPS TFT LCD panel, driver IC, FPC and Back Light. The IPS TFT Lcd Panel has a color display area with a resolution of 1024*600 Resolution, and the diagonal measurement of the display area is 10.1 inch.

The Driver IC is mounted on glass and can communicate with other components via the FPC. By inputting RGB signals to the control IC, the display panel can display 16.7M colors. Support SPI interface.

Back Light and FPC can be customized according to customer requirements, such as BL brightness, FPC shape structure and interface definition.

Compliant with CE and RoHS standards

LED backlight

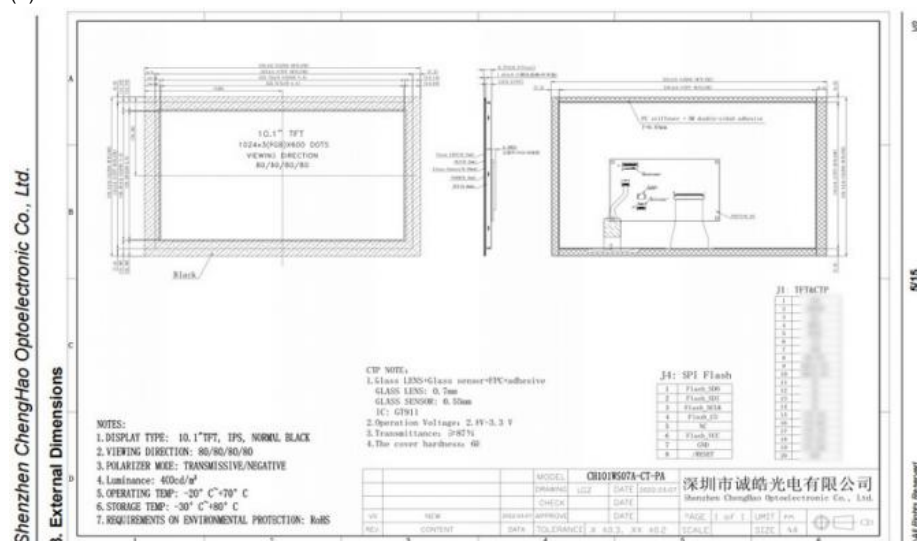
Operating temperature range from -20 to +70°C

Capacitive Touch Panel with Cover Bezel

3. Drawings of spi lcd display

Notes:

- (1) Display Type : 10.1 inch TFT+CTP
- (2) Viewing Direction : ALL
- (4) Polarizer Mode : Transmission / Negative
- (5) Operating Temp : -20~70
- (6) Storage Temp : -30~80
- (7) Unmarker Tolerance: ±0.20
- (8) Protection : ROHS



4. Quick Detail of spi touch screen

Diagonal Display Size: 10.1in

Interface Type: SPI

Resolution: 1024x 600 pixels

Touch Screen: Yes

Viewing Area Dimensions: 223.72(W)×126.28(H) mm

Touch Screen Type: Capacitive

Supply Voltage: 2.8~ 3.3 V

Backlight Type: LED

Display Mode: Transmissive
Dimensions: 252.00(W)×155.5.00(H)×10.75(T) mm
Display Matrix Technology: TFT
Minimum Operating Temperature: -20°C
Maximum Operating Temperature: +70°C
Brightness: 400 cd/m²
Number of Colours: 16.7 Million
Standards Met: CE, RoHS Compliant
Operating Temperature Range: -20 → +70°C
Voltage Rating: 3.3V
Contrast Ratio: 800
Display Type: LCD TFT

5. Our Service

1. And if it is necessary for you to have technical support in the process of development, we can provide it for you at any time.
2. Good quality and credit is the soul of our company. Before shipment, we will guarantee that the products will be done the aging test and 100% of the visual and electric logging.
3. When the product upgrades, we will notify the related clients in advance, and the upgrading product can be perfectly compatible with the old ones.
4. The warranty period of the product is 12 months.



Shenzhen ChengHao Optoelectronic Co., Ltd.



+86 755-27806536



add@chenghaolcm.com



chenghaolcd.com

7th floor, building C5, Hengfeng Industrial City, Hangcheng street, Bao'an District, Shenzhen