



1.9 Inch Small LCD Touch Screen 30pin MCU 170*320 IPS TFT Display

Our Product Introduction

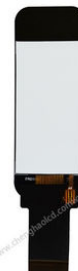
Basic Information

- Place of Origin: ShenZhen, China
- Brand Name: Chenghao/Oem
- Certification: ROHS、ISO9001、CE
- Model Number: CH190QV01A-CT
- Minimum Order Quantity: 100 pcs
- Price: Negotiation
- Packaging Details: All the products are packed in right way to keep it safe. For small sizes of products we use tray + carton, For bigger sizes we use foam slot + carton. we also design packages according to customers' requirements
- Delivery Time: 7-15 working days
- Payment Terms: T/T
- Supply Ability: 300Kpcs/month



Product Specification

- Product Name: 1.9 Inch Small LCD Touch Screen
- Display Model: IPS /Transmissive/ Normally Black
- Display Type: 1.9"TFT+CTP
- Number Of Dots: 170*320
- Viewing Direction: 80/80/80/80
- TFT Interface: MCU
- FPC Number: 30
- Driver IC: ST7789
- Highlight: 1.9 Inch Small LCD Touch Screen, 30pin mcu Small LCD Touch Screen, MCU IPS Tft Display



More Images



Product Description

1.9 Inch Small LCD Touch Screen 30pin Mcu 170*320 IPS Tft Display

1. Specification

| | |
|-------------------|---------------------------------|
| MODEL NO. | CH190QV01A-CT |
| Module type | 1.9inch TFT+CTP |
| Display Mode | IPS/Transmissive/Normally Black |
| Number of Dots | 170*320 |
| Viewing Direction | Full |
| Module size | 26.8*72.0*2.28 mm |
| TFT Active area | 22.7*42.72 mm |
| Interface | SPI+MCU |
| Backlight Type | White LED |

2. Description

ChengHao Display model CH190QV01A-CT is a color active matrix thin film transistor (TFT) liquid crystal display (LCD) that uses amorphous silicon TFT as a switching device. This model is composed of a TFT LCD panel, a touch panel, a driving IC, a back-light and FPC.

This TFT LCD has a 1.9 (vertical screen) inch diagonally measured active display area with 170*320 resolution.

The driver used for this project is the ST7789 and can display 262K/65K colors by R.G.B. signal input. The driver is mounted on the glass and the interconnection via FPC including components to drive the display module. Support SPI interface.

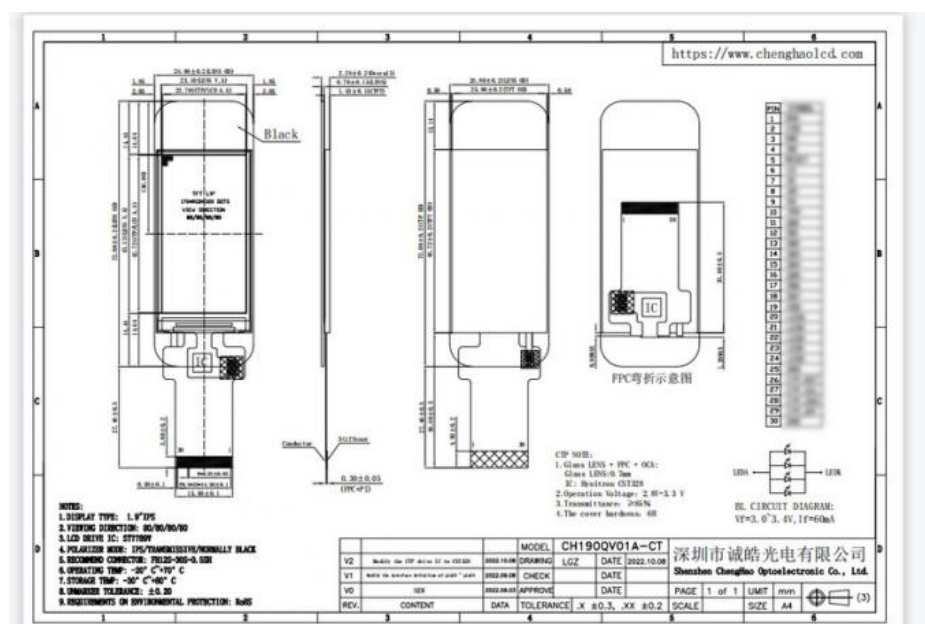
In addition, FPC can also be customized according to customer requirements, such as modifying back-light and FPC structure, interface definition, etc.

RoHS Compliance & Halogen Free.

3. Drawings

Notes:

- (1) Display Type : 1.9inch TFT+CTP
- (2) Viewing Direction : FULL
- (3) Lcd Drive IC : ***
- (4) Polarizer Mode : ****
- (5) Storage Temp : -30~80
- (6) Unmarker Tolerance: ± 0.20
- (7) Protection : ROHS



4. Quick Detail

LCM number : CH190QV01A-CT

Resolution : 170*320

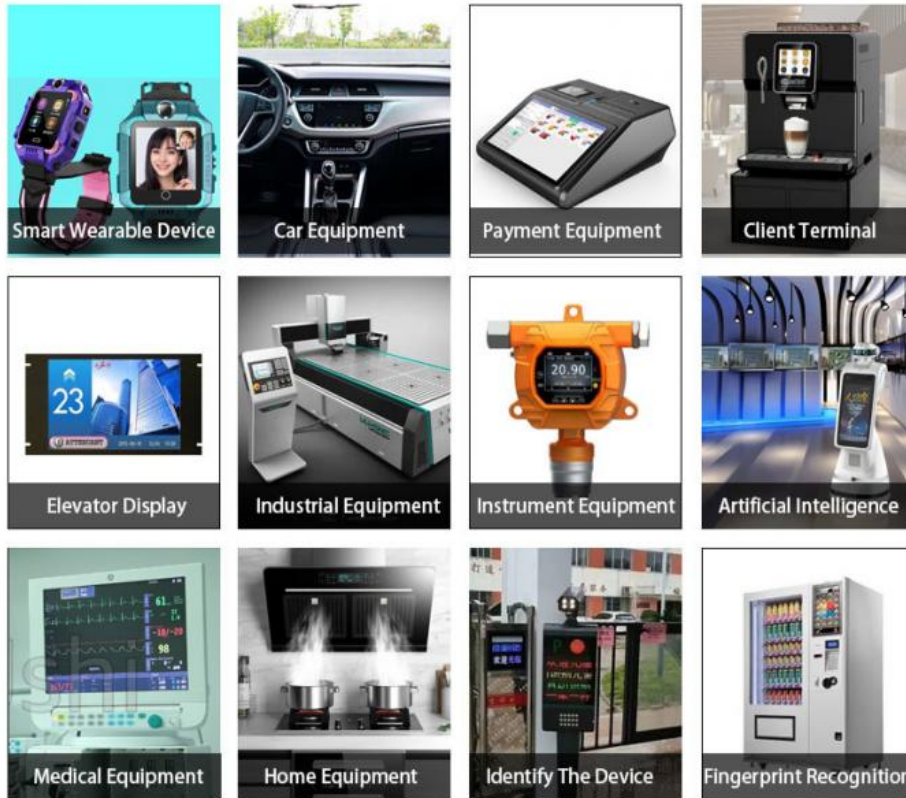
Dot pitch : *****

Outline dimension : 26.8*72.0*2.28 mm

Active Area : 22.7*42.72 mm

View angle : R/L/U/D 80/80/80/80(Deg)
 TFT Electrical Interface : SPI/MCU
 Tft driver IC : ***
 Contrast ratio : 800
 Backlight Type : LED
 Response time : ***** (ms)
 Display mode : IPS, Normally Black, Transmissive
 Operate temperature : -20-70(°C)
 Storage temperature : -30-80(°C)
 Display Colors : 262K/65K
 Backlight lifetime : 20k hrs (Min.)
 Touch Panel Type: CTP

5. Application



6. Our Service

1. We provide one-year product after-sales guarantee service to all customers who purchase our products.
2. For any technical problems encountered by customers in the process of testing or using our products, our technical team will provide customers with remote online technical support services at any time.
3. We are a factory-type supplier with ISO certification. Our products on sale have undergone strict quality inspection and testing before shipment, and have also passed CE/ROHS certification.
4. We have a professional after-sales service team, which can provide strong guarantee and logistical technical services for your orders.
5. Replacement within 30 days after the shipment of products from us due to products' problems.
6. We have long cooperation with many shipping companies and our export volume is large. The shipping companies can offer us good discounts.

7. FAQ

Q1: Do you testing the products before shipment?

A: we tested every products quality before send out .

Q2: What is your payment methods ?

A: T/T, Paypal, West Union and so on .

Q3: What's the lead time? Sample order is available?

A: lead time : 7-15 working days. We don't have MOQ, Sample order is ok.

Q4: Can you produce according to the samples?

A: Yes, we can produce by your samples or technical drawings design , we can also build the molds.

Q5: What is your terms of packing?

A: Generally, we pack our goods in standard package , also if you have legally registered patent, we can pack the goods in your branded boxes.





+86 755-27806536



add@chenghaolcm.com



chenghaolcd.com

7th floor, building C5, Hengfeng Industrial City, Hangcheng street, Bao'an District, Shenzhen