



## 2.42 Inch Small OLED Display I2C Interface 128\*64 Resolution With 4pin

### Our Product Introduction

for more products please visit us on [chenghaolcd.com](http://chenghaolcd.com)

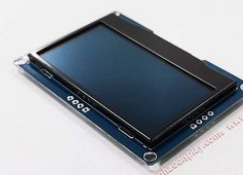
#### Basic Information

- Place of Origin: China Shenzhen
- Brand Name: Chenghao Optoelectronic
- Certification: CE、RoHS、FCC
- Model Number: CH240L004A-PW
- Minimum Order Quantity: 100 pcs
- Packaging Details: All the products are packed in right way to keep it safe. For small sizes of products we use tray + carton, For bigger sizes we use foam slot + carton. we also design packages according to customers' requirements
- Delivery Time: 3~5 working days
- Payment Terms: TT or Others
- Supply Ability: 300K pcs/month



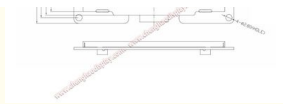
#### Product Specification

- Product Name: 2.42 Inch Small Oled Display
- Operating Voltage: 3.3V VDD
- ROHS STANDARD: Yes
- Storage Temp: -40~ +85
- Display Mode: OLED White
- Operating Temperature: -40~70
- Diagonal Size: 2.42 Inch
- OPERATING CURRENT: 35MA(max)
- Driving Ic: SSD1309
- Highlight: 4pin Small Oled Display,  
128\*64 Small Oled Display,  
2.42 inch Small Oled Display



#### More Images





## Product Description

### Product Description:



This is a 2.42-inch OLED display module with a resolution of 128x64 and supports smooth operation in environments as low as -40°C and as high as +70°C.

OLED display modules do not require a backlight when working and can emit light by themselves. Especially in low ambient light conditions such as dark rooms, OLED screens can easily achieve higher contrast than LCDs.

This 2.42 inch OLED screen uses SSD1309 driver chip and supports communication with external devices through the IIC interface. We also provide the demo codes for C51, Arduino, STM32, and ESP32.

### Features:

Product Name: OLED Display Module

Driving Ic: SSD1309

Storage Temp: -40~ +85

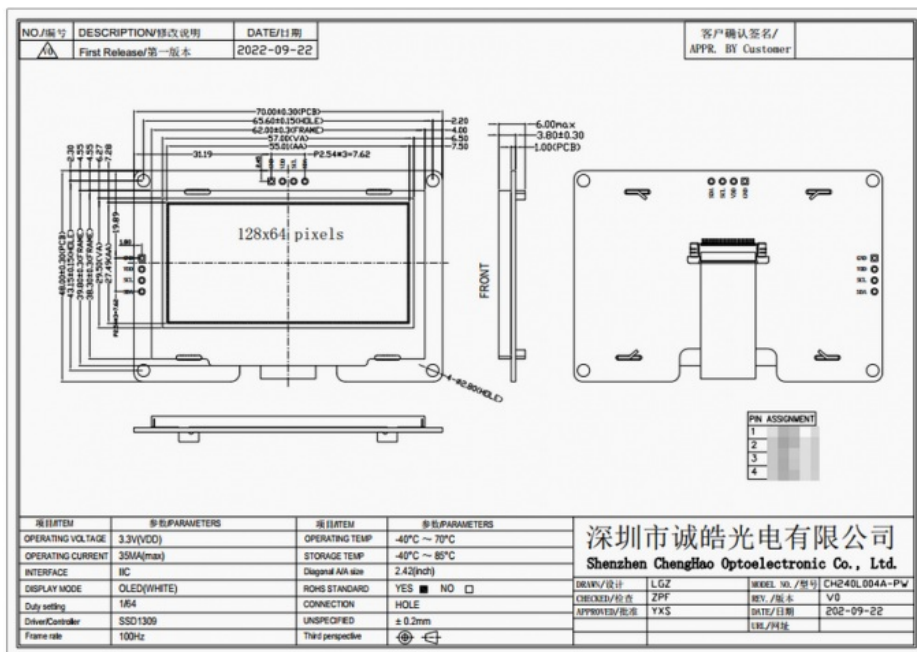
OPERATING CURRENT: 35MA(max)

Operating Temperature: -40~70

This OLED Display Module features a 2.4 inch oled screen display and uses the SSD1309 driving ic. It has a storage temperature range of -40~ +85 and an operating temperature range of -40~70 . Its maximum operating current is 35MA. The module has an outline size of 70\*48\*6 Mm.

### Technical Parameters:

ROHS STANDARD	Yes
Active Area	55.01 X 27.49 Mm
Diagonal Size	2.42 Inch
Storage Temp	-40~ +85
Oled Interface	I2C
Number of pins	4 Pins
Driving Ic	SSD1309
Operating Temperature	-40~70
Operating Voltage	3.3V (VDD)
OPERATING CURRENT	35MA(max)



## Applications:

Chenghao Optoelectronic's CH240L004A-PW is a 2.42 inch small OLED module with a display mode of OLED (White). It features an SSD1309 OLED display and an I2C interface making it easy to integrate into your project. This OLED display module is made in China, Shenzhen and is certified by CE, RoHS, and FCC making it a reliable choice for your project.

The CH240L004A-PW OLED display module can be used in a variety of product applications. One such application is in wearable devices such as smartwatches. The small size of the OLED module makes it an ideal choice for such devices. It can also be used in other consumer electronics such as fitness trackers and portable media players.



Another application of the CH240L004A-PW OLED display module is in industrial products such as measuring instruments and control systems. With an operating temperature range of -40~70 , this OLED module can withstand harsh environments. The I2C interface makes it easy to connect to microcontrollers and other control systems.

The CH240L004A-PW OLED display module can also be used in automotive applications. Its small size makes it a great choice for dashboard displays and other applications where space is limited. The module's low operating current of 35mA(max) also makes it an energy-efficient choice for automotive applications.

## Support and Services:

OLED display module is a high-quality product that requires technical support and service to ensure optimal performance. Our team of experts offer a range of services to help you get the most out of your OLED display modules. Our technical support services include:

- 1.Troubleshooting and problem resolution
- 2.Module testing assistance
- 3.Provide necessary software code

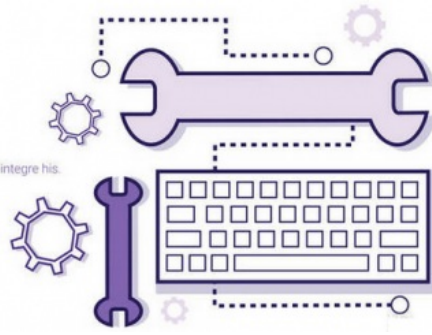
In addition to technical support, we offer a range of services to help you customize and optimize OLED display modules to your specific needs. These services include:

- 1.Custom design and manufacturing
- 2.Integrated services
- 3.technical consulting
- 4.Shipping customization

Our goal is to provide you with the highest level of support and service so you can get the most out of your OLED display modules. If you have any questions or need help, please feel free to contact us.

## SERVICES

Lorem ipsum dolor sit amet, eu agam integre his.  
Zril aperiam ut vim.



### FAQ:

Q: What is the brand name of the OLED Display Module?

A: The brand name of the OLED Display Module is Chenghao Optoelectronic.

Q: What is the model number of the OLED Display Module?

A: The model number of the OLED Display Module is CH240L004A-PW.

Q: Where is the OLED Display Module made?

A: The OLED Display Module is made in China Shenzhen.

Q: What certifications does the OLED Display Module have?

A: The OLED Display Module has CE, RoHS, and FCC certifications.

Q: What is the minimum order quantity for the OLED Display Module?

A: There is no minimum order quantity for the OLED Display Module.

Q: What is the packaging method for the OLED Display Module?

A: All the products are packed in the right way to keep them safe. For small sizes of products, we use tray + carton. For bigger sizes, we use foam slot + carton. We also design packages according to customers' requirements.

Q: What is the delivery time for the OLED Display Module?

A: The delivery time for the OLED Display Module is 3~5 working days.

Q: What are the payment terms for the OLED Display Module?

A: The payment terms for the OLED Display Module are TT or others.

Q: What is the supply ability of the OLED Display Module?

A: The supply ability of the OLED Display Module is 300K pcs/month.



**Shenzhen ChengHao Optoelectronic Co., Ltd.**



+86 755-27806536



add@chenghaolcm.com



chenghaolcd.com

7th floor, building C5, Hengfeng Industrial City, Hangcheng street, Bao'an District, Shenzhen